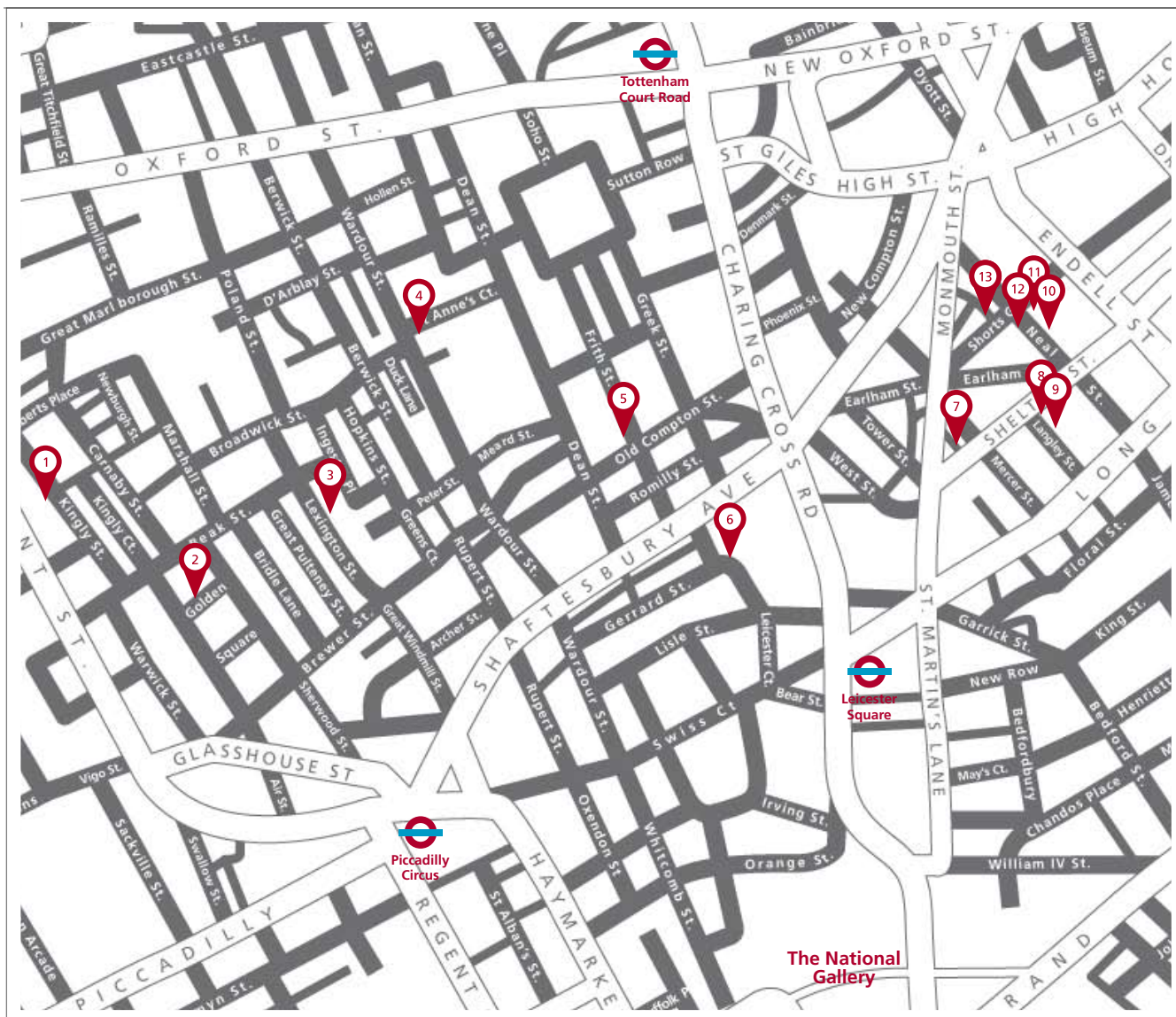


THE ESCAPING THE CITY TOUR

KINGLY STREET – NEALS YARD



When the sun is beating down and everyone in London but you is packed onto Brighton Beach don't sweat, we've got the perfect solution. Follow the Escape the City Tour to get your fill of stunning views, peaceful ponds and frolicking Gods and Goddesses. Ice Creams optional. If this tour gets you in the mood to go al fresco, you could pick up a feast fit for Bacchus and Ariadne and hunker down in Soho Square or Golden Square, or if all those open spaces are making you nervous head to the subterranean safety of Two Floors on Kingly Street.

Start Point: Kingly St.
End Point: Neals Yard
No. of Paintings: 13
Tour Time: 50 minutes



THE
NATIONAL
GALLERY

Powered by 
invent

THE ESCAPING THE CITY TOUR

KINGLY STREET – NEALS YARD

Below are the paintings you will encounter on your tour along with the address and location. For more information call the number on the plaque to hear Gallery experts talk about the paintings.

1



Bathers at Asnières, 1884
Georges Seurat

Hamleys
188-196 Regent Street
London W1B 5BT

2



The Fighting Temeraire, 1838-39
Joseph Mallord William Turner

Clear Channel
33 Golden Square
London W1F 9JT

3



Mr and Mrs Andrews, about 1750
Thomas Gainsborough

12-26 Lexington Street
London

4



Bacchus and Ariadne, 1520-3
Titian

124-126 Wardour St
London W1F 0TY

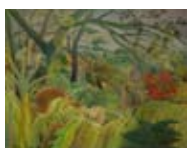
5



Sunflowers, 1888
Vincent Van Gogh

Caffè Nero
43 Frith Street
London W1V 5TE

6



Surprised (Tiger in a Tropical Storm), 1891
Henri Rousseau

126 Shaftesbury Avenue
London

7



An Extensive Landscape with a Road by a River 1655
Philips Koninck

Ching Court
15-17 Shelton Street
WC2H 9EY

8



Seaport with the Embarkation of Saint Ursula, 1641
Claude

London Film School
24-26 Shelton Street
London WC2H 9UB

9



Bathers at La Grenouillère, 1869
Claude-Oscar Monet

Covden House
7a Langley Street
London WC2H 9JA

10



Boating on the Seine, 1875
Pierre-Auguste Renoir

The Organic Pharmacy
36 Neal Street
London WC2H 9PQ

11



The Water-Lily Pond, 1899
Claude-Oscar Monet

Origins
40 Neal Street
London WC2H 9PS

12



The Hay Wain, 1821
John Constable

Size?
37a Neal Street
London WC2H 9PA

13



The Four Elements: Earth, 1569
Joachim Beuckelaer

Neals Yard
Holland and Barratt
21-23 Shorts Gardens
London WC2H 9AS



THE
NATIONAL
GALLERY

Powered by

